

# **NXT**

**NEXT WELDING TOOLS**



# **MIG500M**

## **MULTI-PROCESS WELDING MACHINE**

## MIG500M: MIG Welding Machine

MIG-M series welding machines is a multi-process welding equipment. It equips simple operation, high reliability, high-cost performance, wide adaptive range, and other features. It can be applied in shipbuilding, steel fabrication, automobile, heavy machinery, and other indus

- **Reliable analog control system:** precisely control output waveform, realize stable welding procedure of CV welding process, reduce welding spatter.
- **100% arc starting success rate:** individual wire feeding control and ball removing control circuits, and high-power arc starting energy, ensure a 100% arc starting success rate.
- **Stable wire feeding:** 4 rolls drive, DC speed regulating wire feeding system, stable wire feeding.
- **Easy to use:** Simple adjustment, reliable operation, only need to adjust current and voltage
- **Long-distance welding:** wire feeder cable reaches up to 50m.
- **Convenient move:** Integrated type machines, specially designed for movement



## MIG500M: Power Source And Accessories

- **Reliable analog control system:** precisely control output waveform, realize stable welding procedure of CV welding process, reduce welding spatter.
- **100% arc starting success rate:** individual wire feeding control and ball removing control circuits, and high-power arc starting energy, ensure 100% arc starting success rate.
- **Multi-process:** CO2/MAG/FCAW/MMA/TIG/GOUGING.
- **Multi-voltage design:** design to meet requirements of global power supply voltage system.
- **Reliable main circuit design:** IGBT module soft-switch control, diode module output, extremely high reliability.
- **Multiple proofings:** reliable insulation of the main circuit; the control board is processed for insulation through insulating oil.
- **Multiple protections:** overheat protection, over-voltage protection, over-current protection, and so on.



## PRODUCT SPECIFICATIONS

Model	MIG500M
Power voltage/frequency(3~)	AC220/440V±10%,50Hz
Rated input capacity (KVA)	24
Rated input current (A)	37/32
Welding current range (A)	60~320/60~500
Welding voltage range (V)	17~39
OCV (V)	95
Duty cycle(%)	60
Wire diameter(mm)	Φ1.0, Φ1.2, Φ1.6
Gas flow(L/min)	15~20
Dimension (mm)	660*320*560
Weight (Kg)	50
Insulation rate	H
Protection class	IP23
EMC emission class	A

## Wire Feeder

- Closed type wire feeding device, more safe protections, reduced occurrence of short circuit.
- 4WD wire feeding motor, reliable DC speed adjusting circuit, more stable wire feeding speed.
- Euro-type welding torch connector.
- Current and voltage adjustment.

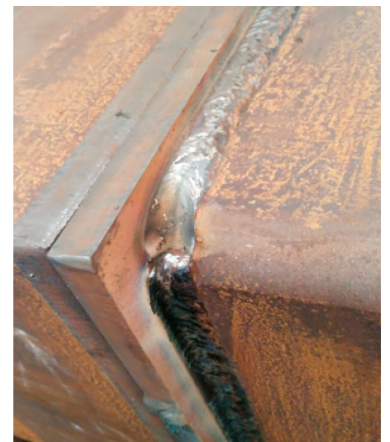


## PRODUCT SPECIFICATIONS

Model	WF-500
Motor	Magnet motor
Motor rated voltage (V)	DC 24
Motor rated current (A)	3
Wire feeding speed (m/min)	2.5-20
Rated welding current (A)	500
Wire diameter (mm)	Φ1.0, Φ1.2, Φ1.6
Gas flow (L/min)	15~20
Dimension (mm3)	686*284*406
Weight (Kg)	15

## INDUSTRIAL APPLICATION

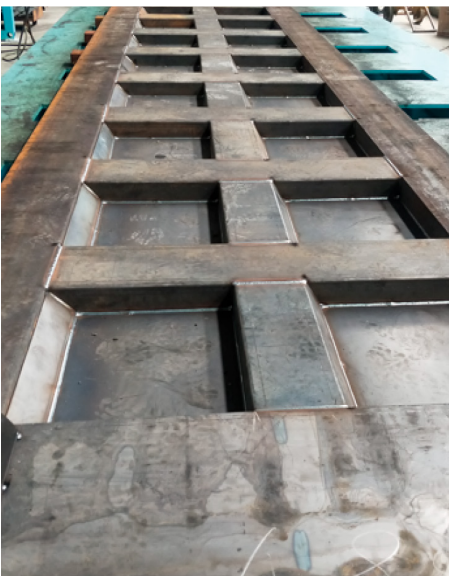
### Steel Fabrication



## Shipbuilding



## Shipbuilding





Calle Guam 68, Col. Euzkadi, C..P. 02660,  
Del. Azcapotzalco, Ciudad de México.

**TEL. 5521218632**