

Ficha técnica

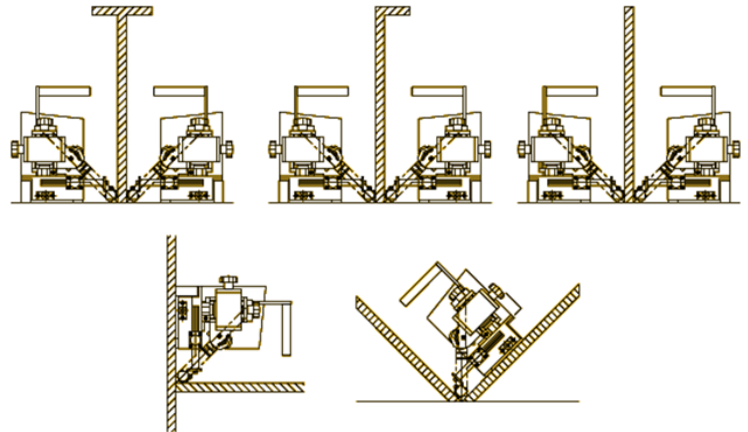
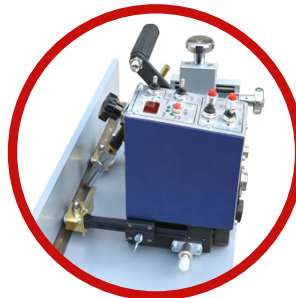
Description:

HK-5B is an equipment that can be used for chopping or continuous horizontal fillet welding. The actual distance of welding/non-welding can be adjusted by the waved switch, controlled by the electric engine and displays on the display screen. It can be used for accurate welding due to its homogeneous running speed and high degree of precision. The maximum running speed of the welding barrow at the time of non-welding is 1900mm/min.

Product function:

HK-5B is made up of the body of the barrow, X-Y gliding block, directive wheel, inductive switch in the torch, magnetron hand grip, and control casing and so on:

- Driving part:** It is the driving device, which includes motor, planet reducing box, driving gear and guide wheel.
- X-Y gliding block:** the device for adjusting the position of the torch, and fine turning for up, down, left and right.
- Welding torch clip:** the device for fixing the torch.
- Directive wheel:** the device that is rolling on the surface of the base metal as a guide to the correct welding position.
- Magnetron hand grip:** the device for the convenience of fixing and shifting the barrow.
- Control casing:** adjust all the actions of the barrow, there are details in the control panel illustration section.
- Magnet:** The permanent-magnet can prevent the barrow from getting away from the sealing wire.



Technical Specification:

Weight	Dimension	Power source	Shifting
8.3Kg	320mm×230mm×290mm	DC 24	Four-wheel drive (Rubber rim)
Speed of travel	Adjustable range of the torch		Operation function
30~1900mm/min (Display on the nixie tube)	(3) Working angle range	±45°	Setting of runoff time
(1) Up and down	(4) Moving angle range	±10°	Setting of the speed of travel
(2) Font and back			0~3.5 S
			Display on the nixie tube

Place of Origin: China

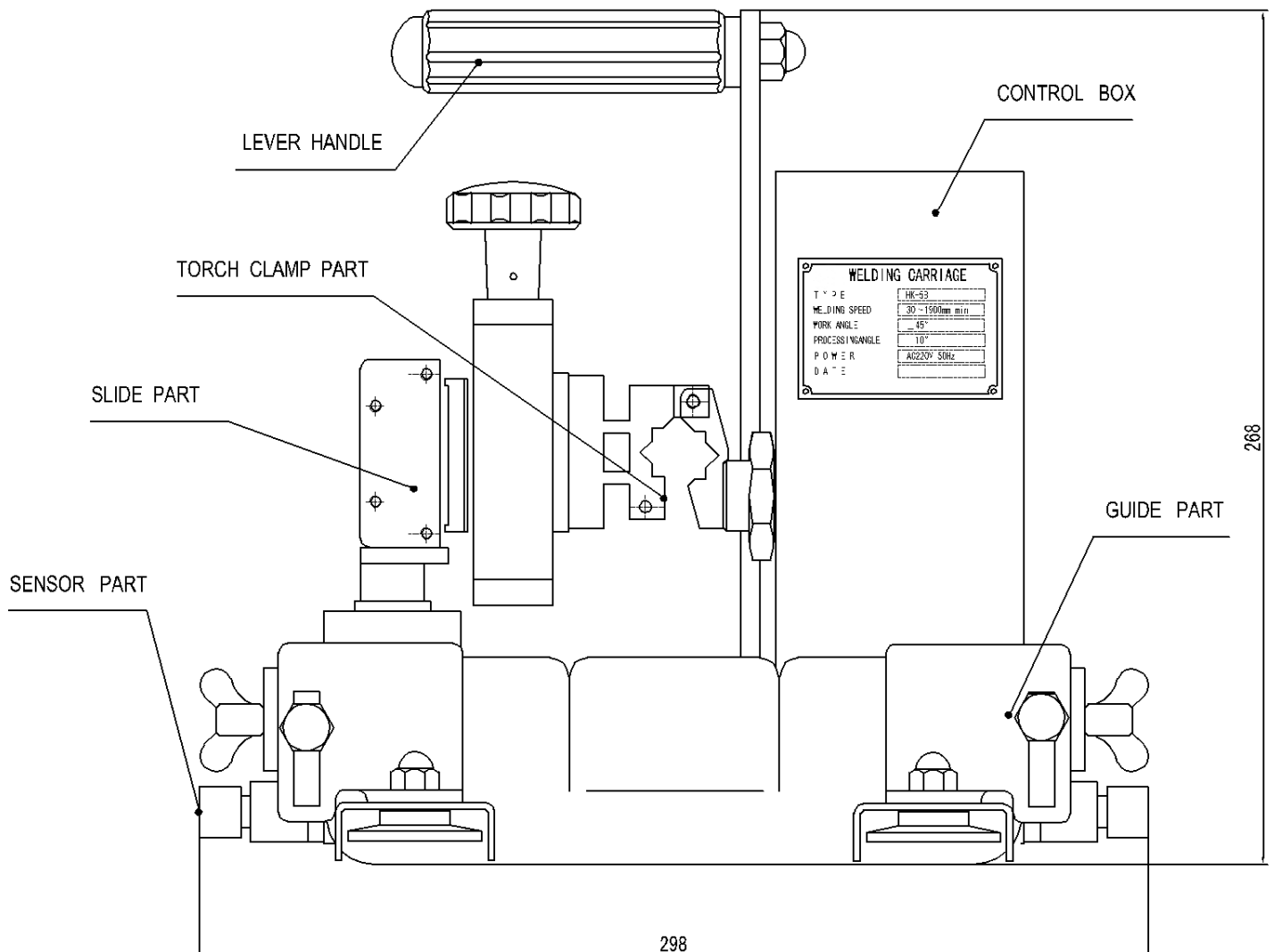
Ficha técnica

Product function:

NAME : Continuous/discontinuous automatic welding barrow
MODEL NUMBER : HK-5B

ACCESSORIES:

- | | | | |
|---------------------------------|----------|---------------------------|---------|
| 1. Regulated power supply DC24V | one set | 5. Inner hexagon spanner | one set |
| 2. Standard power cord 220V/20M | one set | 6. Instruction book | one set |
| 3. 2P torch control line 500mm | one set | 7. Conformity certificate | one set |
| 4. Fuse 220V/2A | two sets | | |



Place of Origin: China